

BULLETIN

CORPUS CHRISTI GEOLOGICAL SOCIETY



And

COASTAL BEND GEOPHYSICAL SOCIETY



September
2006

ISSN 0739-5620

Call for Papers



Gulf Coast Association of Geological Societies and Gulf Coast Section of SEPM

57th Annual Convention, Corpus Christi, TX Oct. 21-23, 2007
HOST: CORPUS CHRISTI GEOLOGICAL SOCIETY

With our presence on the sparkling Gulf Coast of Texas, the Corpus Christi Geological Society has set the theme of the 57th convention of the GCAGS as EXPLORING THE THIRD COAST. Better product pricing has sparked a tremendous growth in our industry. We anticipate papers that will reflect aspects of today's exploration and exploitation and will stand as a legacy to those just entering our profession. In keeping with our recent publication— *Wooden Rigs Iron Men -History of South Texas Oil and Gas*, we would like to create a SPECIAL SESSION specifically for historical purposes –“INDUSTRY HISTORIES”. This is the time for all you old-timers to record your memories of significant discoveries, drillers, drilling, blowouts or darn good stories. But please, keep those excellent papers on geology, sedimentology, etc., coming as well.

TOPICS MAY INCLUDE, BUT ARE NOT LIMITED TO:

Back to Basics—Geology Integrated With 3-D
Old Plays New Ideas
Application of New Technologies
Sequence Stratigraphy
Environmental Geology
Hurricanes & Coastal Impacts

Case Histories
Salt Plays/Offshore Plays
Industry Histories-SPECIAL SESSION
Gas Hydrates/Seeps
Coastal Aquifers & Ground Water
Modern Depositional Processes

Prepare Abstracts and papers in Microsoft Word using AAPG guidelines (see www.gcags2007.com), and include specific applications to Gulf Coast area geology. Chose your presentation type:

Oral Presentations – manuscript to be published in FULL in the Transactions volume of the convention

Poster Presentations – to be published as extended one page abstracts, with optional one-page illustrations

Include with your abstract your full mailing address, telephone and fax numbers, email address, and whether you are submitting for an oral or a poster presentation.

Submit abstracts by January 12, 2007 to:

GCAGS abstracts:

Frank G Cornish-Technical Program Chair
361-882-2883 361-882-2980 fx

fcornish@interconnect.net

(Include GCAGS in subject or it goes in the trash.)

SEPM abstracts:

Dr Jennifer Smith-Engle- Technical Program Chair
361-825-2436

jennifer.smith-engle@tamucc.edu

(Include SEPM in subject or it may go anywhere!)

We will notify of acceptance by Feb 20, 2007. Completed papers are due April 2, 2007.

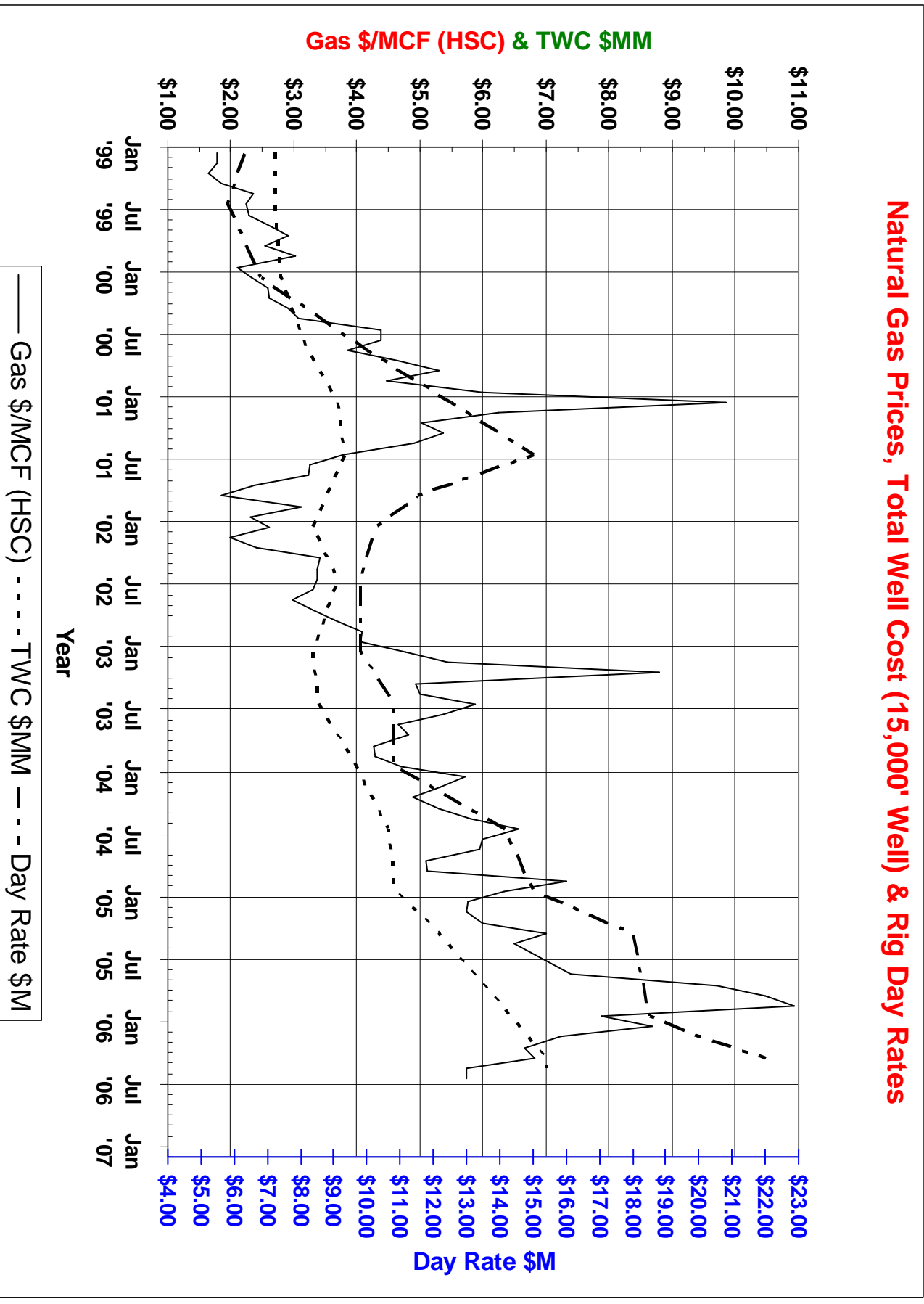
**CCGS/CBGS JOINT MEETINGS
2006-2007**

SCHEDULED SPEAKERS

<u>DATE</u>	<u>SPEAKER</u>	<u>COMPANY</u>	<u>TOPIC</u>
October 18, 2006	Cindy Yielding Geoscience Authority	BP America, Inc.	"Is the Work Station Killing Geology?"
November 15, 2006	Bill Fahmy	Exxon Mobil Exploration Co.	"DHI/AVO Best Practices Methodology and Applications"
December 20, 2006	Dr. John Anderson Maurice Ewing Professor of Oceanography	Rice University	"Evolution of the Corpus Christi Bay and Mustang Island Coastal System"
January 17, 2007	Mike Lucente Vice-President/Exploration	LMP Petroleum, Inc.	"Anatomy of a New Field Discovery"
February 21, 2007	To be determined		
March, 2007	To be determined		
April 18, 2007	Frank Cornish	Imagine Resources, LLC	"Discovery & Development of the Lower Wilcox SW Speaks Field, Lavaca County, Texas"
May 16, 2007	To be determined		

Because of the cyclic nature of our industry Suemaur has found that it is beneficial to plot certain "key parameters." The following internally generated graphs have proven useful in budgeting, controlling finding costs and projecting future exploration economics and drilling activity. Bill Maxwell, Suemaur Exploration & Production, LLC

Natural Gas Prices, Total Well Cost (15,000' Well) & Rig Day Rates





Visualize the Possibilities

Announcing the:

GCAGS

56th Annual Convention

GCPE

11th Annual Gulf Coast Prospect Expo

HOSTED BY
THE LAFAYETTE GEOLOGICAL SOCIETY
THE LOUISIANA OIL & GAS ASSOCIATION
THE GULF COAST SECTION OF SEPM

Lafayette, Louisiana
September 25 – 27, 2006

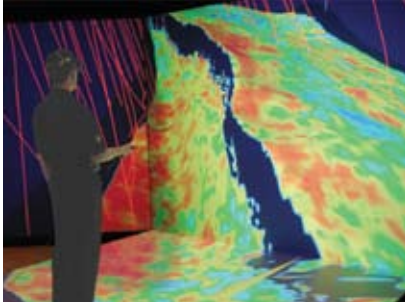
First time in GCAGS history, 3 technical sessions will be held in a 3-D STEREO IMMERSIVE ENVIRONMENT, using the state-of-the-art 175-seat auditorium at the Louisiana Immersive Technologies Enterprise (LITE) facility.

CONVENTION HIGHLIGHTS

- Over 130 Oral & Poster Presentations
- 3 Field Trips, 5 Continuing Education Courses
- Forum of Top Industry Leaders Discussing “The Gulf of Mexico Oil and Gas Industry: the Road Ahead”
- GCAGS has combined with the Gulf Coast Prospect Expo
- Geoscientists with the International Geological Correlation Program 490 will join our convention with focus on Natural Disasters
- 3-D immersive visualization presentations in new LITE facility - Live Stereo Format, Seismic Interpretation, Geologic Interpretation, LIDAR, Outcrop Imaging, and Effects of Hurricanes

Register Online Now

www.gcags2006.com



Louisiana Immersive Technologies Enterprise (LITE) Center



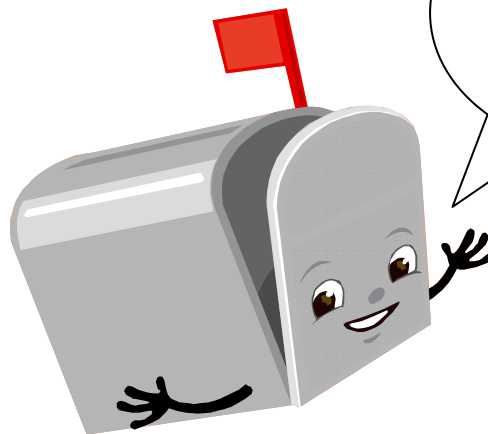
Cajundome Convention Center



CCGS/CBGS Members

Please!

**Mail your dues, renewals,
and directory updates
today.**



I'm
waiting for
you!!!

**Dues: \$25 for CCGS, \$20 for CBGS,
Students half-priced dues.
Business Cards in Bulletin \$30/year.**

Mail to: Randy Bissell, Membership
253 Circle Drive
Corpus Christi, TX 78411

BLOOD DRIVE

THE BLOODMOBILE – IN SEPTEMBER, 2006
WILL BE AT SOME CONVENIENT LOCATIONS
PLEASE CALL 855-4943 for those locations or see below



↑ (This should be YOU!)

*Vacation's over – so --back to school, back to work –
Back to the Bloodmobile!! Get in your groove again –
It only takes a few minutes to donate & save a life.....*

ATTENTION!!!
FOR CURRENT SCHEDULES & LOCATIONS OF
THE BLOODMOBILES YOU CAN LOG ON TO:

www.coastalbendbloodcenter.com

There is a nationwide shortage of blood – and we appeal to our members to give the gift of life. Please tell the Blood Center that you are giving on behalf of the **C.C. Geological Society**. For info. their ph. no. is 855-4943.

Thanks! Mike Lucente

“Star light, Star bright...ccgs sept 06

the first star you see at night is still Jupiter in the western evening sky.

September is the last month to view Jupiter in the evening sky-- be sure to look for the Great Red Spot with a telescope on the nights of September 7th; 10th and 12th. The four Galilean moons of Jupiter (Callisto, Io, Ganymeade and Europa) can easily be seen any night with a telescope.

Saturn can be seen in the predawn sky and is below a crescent Moon on September 18th and 19th.

Venus is the brightest predawn ‘star’ during September, but it will be lost in the Sun’s glare by the end of the month as it rounds the Sun to appear as an evening star.

This year the September full moon is known as the Fruit Moon—it rises 9 minutes after the sun sets on the 7th. It will be the biggest of the year so try to watch it rise from the Corpus Christi Bay.

Fall begins at 11:03 p.m. CDT on September 22nd—the Autumnal Equinox. The full moon closest to this equinox is known as the Harvest Moon-- this year the full moon in October will be the Harvest Moon.

A lunar eclipse occurs at full moon and a solar eclipse will occur at the new moon this month—neither is visible from the United States.

It is wonderful to watch the full moon rise out of the bay:

Thursday	September 7th	7:53 p.m.	100% Fruit Moon
Friday	September 8th	8:28 p.m.	97% waning gibbous
Saturday	September 9th	9:03 p.m.	92% waning gibbous

Owen Hopkins 8/8/06